

Created for Relationship Relationship Broken PUZZLE

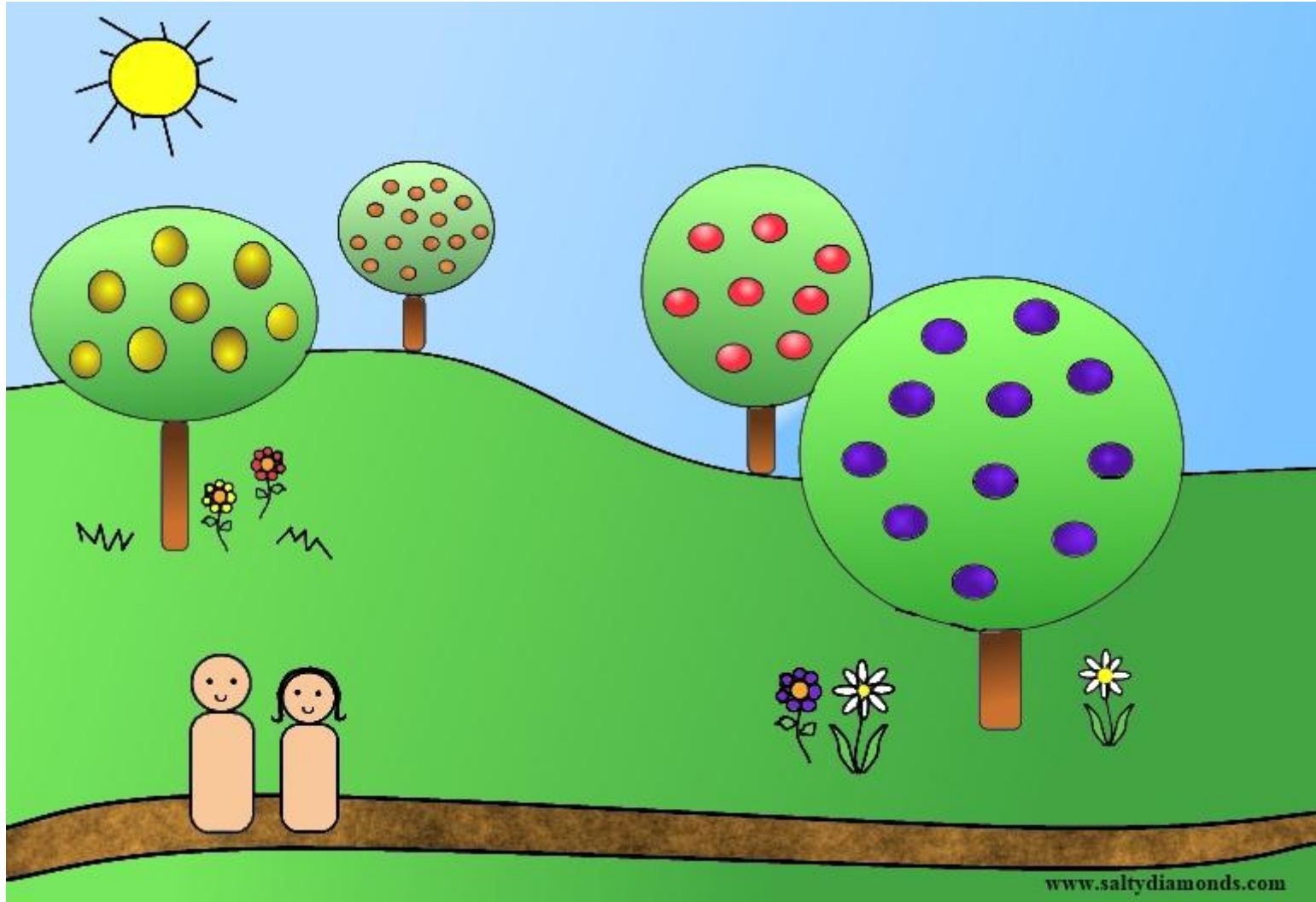
Print Puzzles 1 & 2 on cardstock. Glue them back to back with a thin coat of glue, making sure to cover the whole back well. Sandwich glued picture between 2 sheets of wax paper and press with a couple of heavy books that completely cover the page. Let set at least a few hours; then let the cardstock dry completely before cutting the puzzle apart. Alternative ways to glue is to use spray glue or rubber cement, but you will have to be very careful when you put the cardstock pages together (again back to back). Another method is to buy blank CRAFT PUZZLES and draw your own pictures.

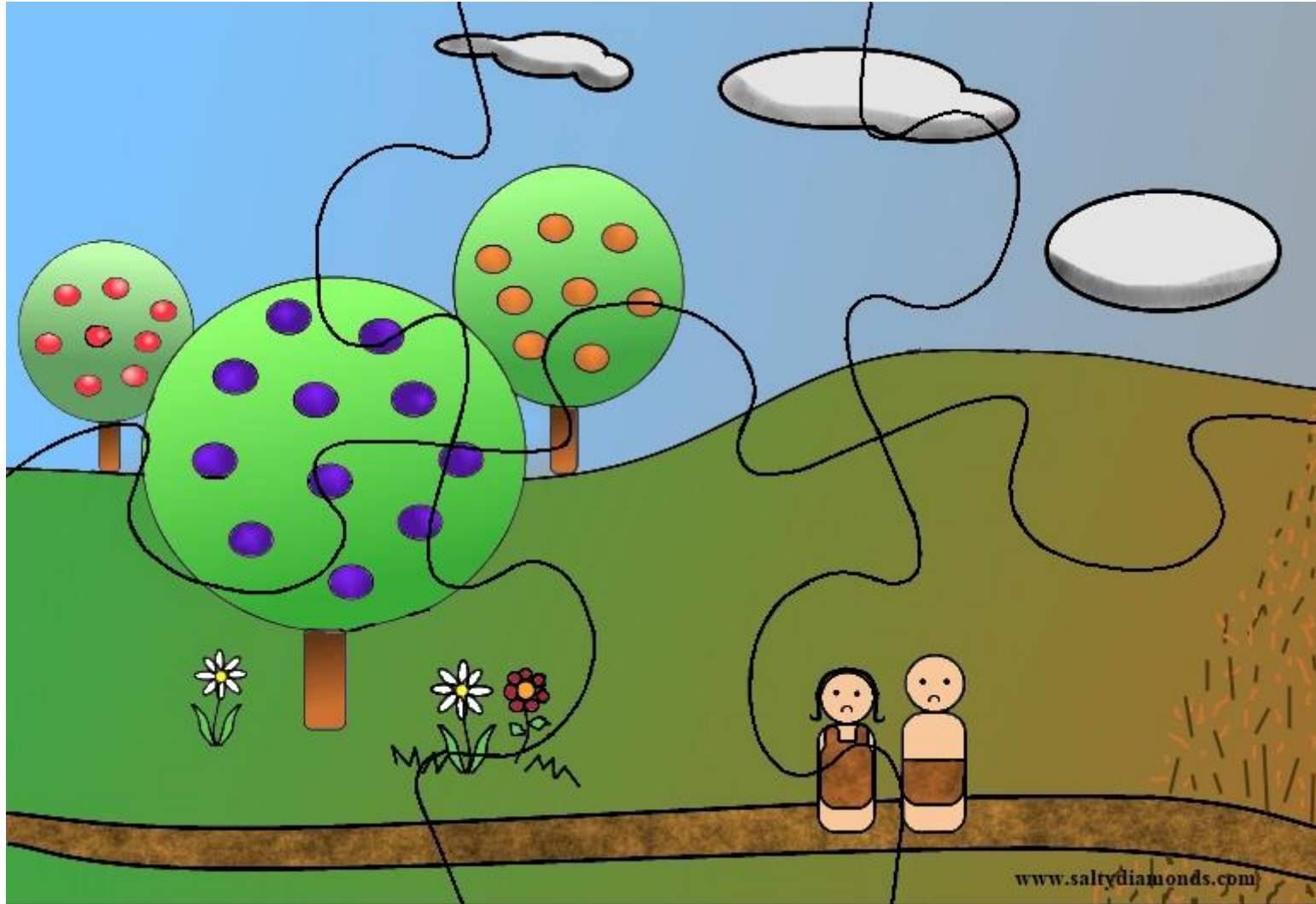
SHOW PICTURE 1. WITHOUT LETTING THEM SEE THE BACK OF THE PICTURE AND TELL THEM THE STORY OF Adam and Eve in the garden before they eat from the forbidden tree.

TAKE THE PUZZLE APART AND TELL CHILDREN: When Adam and Eve eat from the tree, their relationship with God is broken.

TURN THE PUZZLE PIECES OVER AND PUT THE PUZZLE TOGETHER. SHOW THEM PICTURE 2. AND TELL THEM THAT GOD PROVIDES CLOTHING FOR THEM, AND THAT HE HAS A PLAN FOR RESTORATION OF THE RELATIONSHIP, BUT THEY MUST NOW BE DRIVEN FROM THE GARDEN.

(Tell story in your own words and provide information according to ages of children.)







Example of a purchased blank craft puzzle that I hastily drew pictures on front and back of the puzzle.

www.saltydiamonds.com